

Large / conical thigh

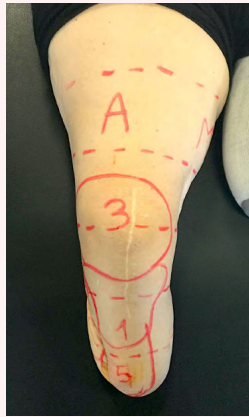
Example 1



Example 2



Example 3



With Your® Liner

Limb



3D model



Your® Liner



Indication

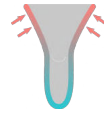
The below-knee segment has a smaller circumference than the above-knee section (thigh). Thigh exhibits a conical shape.



Typical issues

Off-the-shelf liner is too tight on thigh

A standard liner fitting on the below-knee section of the stump can compress the thigh too much. The proximal edge of the liner might also roll down by itself.



Off-the-shelf liner is too loose on distal section of residual limb

A standard liner fitting the thigh might not compress the below-knee segment enough, which might lead to air trapped between stump and liner, or movement between the skin and liner.



Sleeve-related issues

When fitting patients with conical thighs with a sleeve suspension mechanism, the sleeve might be too-tight on the thigh. The sleeve might thus pinch and apply mechanical stresses on the skin at the proximal edge of the liner.



Key features



Anatomically tailored



Optimised reductions



Configurable suspension

Adapted shape and compressions



With its custom shape and adapted compressions, Your® Liner provides a close fit and adequate compressions all over the limb, limiting the risk of too-high or too-low compressions, and of air pockets between the liner and the stump.

The risk of the proximal edge of Your® Liner rolling down by itself is also reduced, as it adequately matches the circumference of the thigh.

Sleeve doesn't pinch skin at proximal edge of liner



Your® Liner offers the possibility of including proximal silicone rings to hold the vacuum directly on the liner, eliminating the need for the sleeve to extend higher than the proximal edge of the liner. The risk of the sleeve pinching and applying mechanical constraints on the skin at the proximal edge of the liner is thereby eliminated.

How can Your® Liner help ?

